

## GR For Inverter Circuits Series

- Screw terminal series in compact case sizes
- High ripple, long life guaranteed for 5000 hours load life at 85°C
- Suited for use in industrial power supplies for inverters
- Complied to the RoHS directive

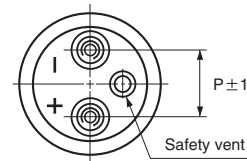
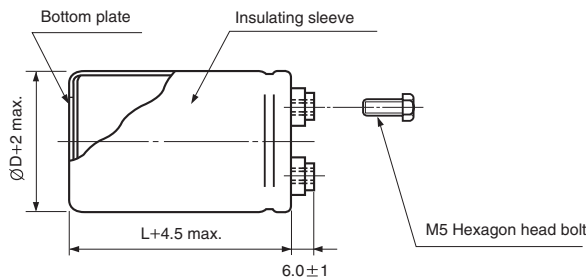
GF ⇒ GR  
High Ripple



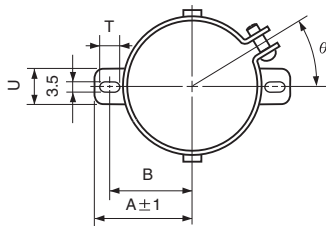
Item	Characteristics	
Operating temperature range	-25 ~ +85°C	
Capacitance tolerance	±20% at 120Hz, 20°C	
Leakage current max.	$I=3\sqrt{CV}$ (μA) (after 5 minutes)	
Dissipation factor max. (at 120Hz, 20°C)	0.25 max. at 120Hz, 20°C	
Load life (after application of the rated voltage for 5000 hours at 85°C)	Leakage current	Less than specified value
	Capacitance change	Within ±30% of the initial value
	tanδ	Less than 300% of specified value
Shelf life (at 85°C)	After 1000 hours no load test, leakage current, capacitance and tanδ are same as load life value. The measurement shall be performed at 20°C by the KS C IEC 60384 - 4	

### ● DRAWING

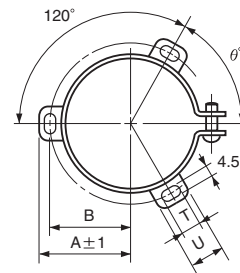
Unit : mm



### ● TWO LEGS ANGLE



### ● THREE LEGS ANGLE



### ● TWO LEGS ANGLE SIZE TABLE

ØD	B	A	T	U	θ°	P
35	24	29	7	10	30	12.7
51	33.6	39.9	6	14	30	22
63.5	40.8	46.8	6	14	30	28.6

### ● THREE LEGS ANGLE SIZE TABLE

ØD	B	A	T	U	θ°	P
51	32.9	38.9	7	12	60	22
63.5	38.4	45.3	7	14	60	28.6
76.2	44.5	51.5	8	16	60	31.8
89	50.8	61	8	16	60	31.8

# LARGE ALUMINUM ELECTROLYTIC CAPACITORS

**GR** series

● DIMENSIONS & MAXIMUM PERMISSIBLE RIPPLE CURRENT

WV Item μF	400			450		
	ØD×L (mm)	Ripple current (A rms)		ØD×L (mm)	Ripple current (A rms)	
		40°C 120Hz	85°C 120Hz		40°C 120Hz	85°C 120Hz
1000	51 × 60	14.0	9.3	51 × 70	15.0	10.0
1200	51 × 65	15.0	10.0	51 × 80	16.1	10.7
1500	51 × 80	17.6	11.7	51 × 90	16.8	11.2
1800	51 × 85	19.5	13.0	51 × 105	18.6	12.4
				63.5 × 70	19.4	12.9
2200	51 × 100	21.0	14.0			
	63.5 × 70	20.7	13.8	63.5 × 85	20.0	13.3
2700				76.2 × 65	20.3	13.5
	63.5 × 80	23.6	15.7	63.5 × 90	22.2	14.8
3300	76.2 × 65	23.1	15.4	76.2 × 75	22.2	14.8
	63.5 × 90	24.2	16.1	63.5 × 110	25.2	16.8
3900	76.2 × 70	24.8	16.5	76.2 × 85	25.1	16.7
	63.5 × 100	26.7	17.8	63.5 × 135	28.1	18.7
4700	76.2 × 80	27.8	18.5	76.2 × 90	27.6	18.4
	63.5 × 120	30.5	20.3	63.5 × 145	31.1	20.7
5600	76.2 × 90	29.7	19.8	76.2 × 110	31.1	20.7
	63.5 × 135	33.9	22.6	63.5 × 165	34.7	23.1
6800	76.2 × 100	32.7	21.8	76.2 × 130	35.0	23.3
				89 × 95	37.7	25.1
8200	63.5 × 165	38.6	25.7			
	76.2 × 120	37.4	24.9	76.2 × 145	38.6	25.7
10000	89 × 90	42.6	28.4	89 × 115	44.6	29.7
	76.2 × 140	42.3	28.2	76.2 × 185	44.1	29.4
10000	89 × 105	47.9	31.9	89 × 135	49.4	32.9
	76.2 × 165	47.9	31.9			
	89 × 120	53.9	35.9	89 × 155	55.2	36.8

● FREQUENCY COEFFICIENT OF PERMISSIBLE RIPPLE CURRENT

WV	Frequency	50Hz	120Hz	300Hz	1kHz	3kHz
400, 450		0.8	1.0	1.1	1.3	1.4