

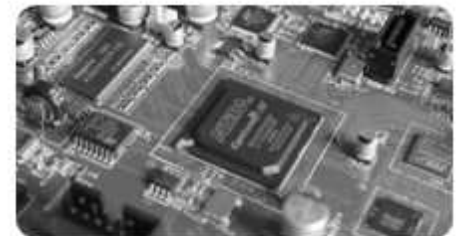


# SMD DC-DC Converters

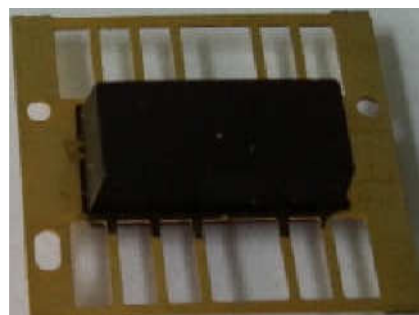
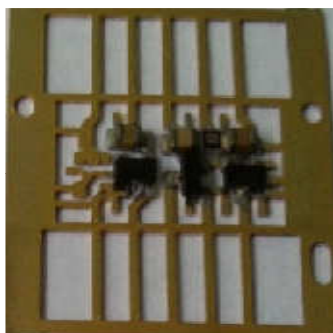
Incorporating lead-frame and injection technology, TOP POWER offers a range of SMD DC/DC Converters with 1KVDC, 3KVDC isolation. They are qualified for high temperature requested by lead-free reflow solder processes and suitable for automated assembly machine.

## FEATURES

- High efficiency
- Isolation voltage up to 3KVDC
- Gold plated pins
- Internal SMD construction with lead-frame technology
- Operation temperature:  $-40^{\circ}\text{C} \sim 85^{\circ}\text{C}$
- Tape & reel package and Tube package available



For more information, and to order samples, please visit <http://en.gztoppower.com/>



## Main product

- 0.25W:  
TPTE-W2, TPTV-W2,
- 1W:  
TPTE, TPTA, TPTV



**PART Series:**

	TPTE	TPTA	TPTV
<b>Power(Watts):</b>	1W	1W	1W
<b>Isolation Voltage:</b>	1KVDC	1KVDC	3KVDC
<b>Output Type</b>	Single Output	Dual Output	Single / Dual Output
<b>Input Volt.(VDC):</b>	3.3V, 5V, 12V, 24V	3.3V, 5V, 12V, 15V, 24V	3.3V, 5V, 12V, 15V, 24V
<b>Output Volt.(VDC):</b>	3.3V, 5V, 9V, 12V,1 5V	±3.3V, ±5V, ±9V, ±12V,±15V	±5V, ±9V, ±12V, ±15V; 5V,9V, 12V, 15V
<b>Temperature:</b>	-40°C to 85°C	-40°C to 85°C	-40°C to 85°C
<b>Dimensions (mm):</b>	12.7*7.7*6.1	15.24*7.7*6.1	15.24*7.7*6.1

	TPTV-W2	TPTE-W2	TPTA-A
<b>Power(Watts):</b>	0.25W	0.25W	1W
<b>Isolation Voltage:</b>	3KVDC	1KVDC	1KVDC
<b>Output Type</b>	Single / Dual Output	Single Output	Single Output
<b>Input Volt.(VDC):</b>	3.3V, 5V, 12V	3.3V, 5V, 12V	3.3V, 5V, 12V, 15V
<b>Output Volt.(VDC):</b>	±5V, ±9V, ±12V, ±15V; 3.3,5V,9V, 12V, 15V	3.3V, 5V, 12V, 15V	3.3V, 5V, 9V, 12V,1 5V
<b>Temperature:</b>	-40°C to 85°C	-40°C to 85°C	-40°C to 85°C
<b>Dimensions (mm):</b>	15.24*7.7*6.1	12.7*7.7*6.1	15.24*7.7*6.1

**Guangzhou Top Power Electronics Technology Ltd.** with headquarters based in Guangzhou China, has been growing successfully to become one of market leading manufacturer of **DC/DC converters (0.1W – 40W) & AC/DC converter (3W-30W)**. We are continuously devoted to design and produce innovative quality power supplies to Power System, Telecom, Measurement Instrumentations, Automotive Electronics, Medical, Military industries.



**Guangzhou Top Power Electronics Technology Ltd.**

**P: 8620 -82019000**

**F: 8620 - 82019111**

**E: [sales2@gztoppower.com](mailto:sales2@gztoppower.com)**